

GOODMAN

RODOLFO DORDONI DESIGN

A detail that becomes volume is the essence of the Goodman design, the modular seating system by Rodolfo Dordoni. With a clear 1970s imprint, the inspiration behind this design is the graphic character of those years, its ability to stratify and cross marks, reducing the complexity of things into a few distinctive features. In this way, in Goodman the mark of the matelassé stitching, typical of Minotti's tailoring processes, draws shadows and light on the seat, creating the sensation of a quilted cross-padding.

The arrangement depicted is just one example of the many different compositions possible with our seating systems. We suggest that you contact the nearest Minotti dealer to explore the options most suited to your needs and select the upholstery of your choice from the exclusive Minotti collection.



TWIGGY - Arrangement 04



SOFA ARRANGEMENT

- 01 GOODMAN**
ELEMENT WITH 1 ARMREST SX
CM 240X110 H86
- 02 GOODMAN**
OTTOMAN CM 108X110 H40
- 03 GOODMAN**
CENTRAL ELEMENT CM 134X110 H86
- 04 GOODMAN**
COUCH CM 108X162 H86

FURNISHING ACCESSORIES

- 05 SENDAI**
ARMCHAIRS CM 74X76 H72
- 06 LOUVER**
COFFEE TABLE Ø CM 120 H25
- 07 LELONG**
SIDE TABLE CM 100X40 H35
- 08 JAMES**
SIDE TABLE CM 70X35 H45
- 09 JAMES**
SIDE TABLE CM 35X35 H45
- 10 PILOTIS WOOD**
SIDE TABLE Ø CM 25 H45
- 11 LANDFIELD STRIPES**
RUG CM 600X500

Furnishing accessories



05
SENDAI
ARMCHAIRS CM 74X76 H72



06
LOUVER
COFFEE TABLE Ø CM 120 H25



07
LELONG
SIDE TABLE CM 100X40 H35



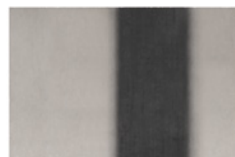
08
JAMES
SIDE TABLE CM 70X35 H45



09
JAMES
SIDE TABLE CM 35X35 H45



10
PILOTIS WOOD
SIDE TABLE Ø CM 25 H45



11
LANDFIELD STRIPES
RUG CM 600X500