

GOODMAN

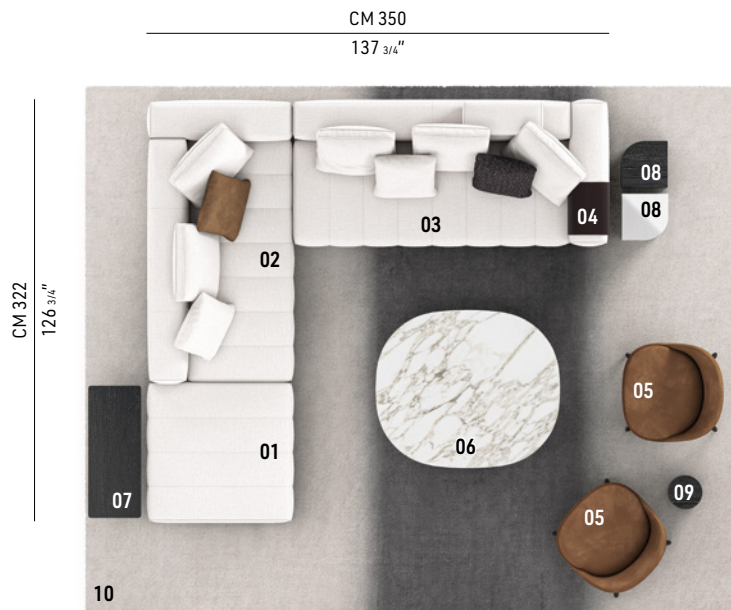
RODOLFO DORDONI DESIGN

A detail that becomes volume is the essence of the Goodman design, the modular seating system by Rodolfo Dordoni. With a clear 1970s imprint, the inspiration behind this design is the graphic character of those years, its ability to stratify and cross marks, reducing the complexity of things into a few distinctive features. In this way, in Goodman the mark of the matelassé stitching, typical of Minotti's tailoring processes, draws shadows and light on the seat, creating the sensation of a quilted cross-padding.

The arrangement depicted is just one example of the many different compositions possible with our seating systems. We suggest that you contact the nearest Minotti dealer to explore the options most suited to your needs and select the upholstery of your choice from the exclusive Minotti collection.



TWIGGY - Arrangement 07



SOFA ARRANGEMENT

- 01 GOODMAN**
OTTOMAN CM 108X110 H40
- 02 GOODMAN**
ELEMENT WITH 1 ARMREST DX
CM 214X110 H86
- 03 GOODMAN**
ELEMENT WITH 1 ARMREST DX
CM 240X110 H86
- 04 GOODMAN**
TRAY FOR ARMREST CM 34X40 H11

FURNISHING ACCESSORIES

- 05 SENDAI**
ARMCHAIRS CM 74X76 H72
- 06 GLADSTONE**
COFFEE TABLE CM 140X120 H25
- 07 LELONG**
SIDE TABLE CM 100X40 H35
- 08 JAMES**
SIDE TABLES CM 35X35 H45
- 09 PILOTIS WOOD**
SIDE TABLE Ø CM 25 H45
- 10 LANDFIELD STRIPES**
RUG CM 500X400

Furnishing accessories



05
SENDAI
ARMCHAIRS CM 74X76 H72



06
GLADSTONE
COFFEE TABLE CM 140X120 H25



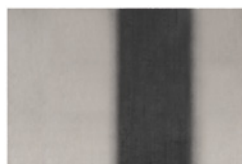
07
LELONG
SIDE TABLE CM 100X40 H35



08
JAMES
SIDE TABLES CM 35X35 H45



09
PILOTIS WOOD
SIDE TABLE Ø CM 25 H45



10
LANDFIELD STRIPES
RUG CM 500X400